

# ShowMatch DeltaQ Array Loudspeaker

## Array Frame Multipoint Bracket (SMAFMP)



## Installation

Thank you for selecting Bose Professional ShowMatch DeltaQ array loudspeakers. This document is intended to provide professional installers with basic installation and safety guidelines for using the Array Frame Multipoint Bracket (SMAFMP) with ShowMatch loudspeakers. Please read this document before attempting installation.

The ShowMatch Array Frame Multipoint Bracket (SMAFMP) increases the number of suspension points along the center rail of the ShowMatch Array Frame (SMAF) or T-Bar Array Frame (SMAFT) by a minimum of 7 to a maximum of 45 possible points.

Use Bose Professional Modeler software to determine the correct position and orientation of the multipoint bracket on the array frames for the required aiming angles and to confirm that the array does not exceed the load limits of the frame. Visit [BoseProfessional.com](http://BoseProfessional.com) to learn more about Modeler.

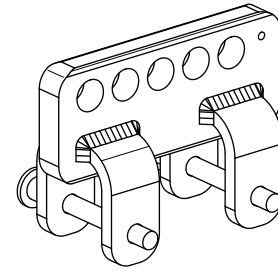
To install the array frame multipoint bracket, follow these instructions:

1. Use Bose Professional Modeler software to generate a ShowMatch Array Rigging Report. Visit [BoseProfessional.com](http://BoseProfessional.com) to learn more about Modeler.
2. Obtain the pickup point from the ShowMatch Array Rigging Report. (See Fig. 1.)

Note the first letter in the pickup point (**A** through **F**). This letter indicates a suspension point on the center rail of the array frame. (See Fig. 2.)

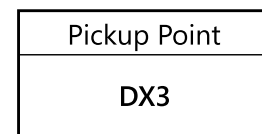
Note the second letter in the pickup point (**X** or **Y**). This letter indicates the correct orientation of the multipoint bracket on the center rail. When oriented correctly, the arrow printed on the multipoint bracket points to the front of the array.

3. Place the multipoint bracket on the center rail in the orientation indicated by the software. (See Fig. 3.)
4. Align the front hole of the multipoint bracket with the suspension point specified in Step 2, and secure it using one of the tethered pins. (See Fig. 4) Check to make sure the pin is fully inserted and secured.
5. Align the rear hole of the multipoint bracket with the adjacent suspension point, and secure it using the second tethered pin. Check to make sure the pin is fully inserted and secured.
6. Attach a graded  $\frac{5}{8}$ -inch lifting shackle (ASME B30.26 or equivalent; not included) to the suspension point on the multipoint bracket as specified by Modeler. (See Fig. 5.) See **Working Load Limit** on the opposite side of this sheet.
7. Connect the chains to the shackle attached to the multipoint bracket.



Array Frame Multipoint Bracket (SMAFMP)  
(quick pin tether not shown)

Fig. 1



Pickup Point DX3

Fig. 2

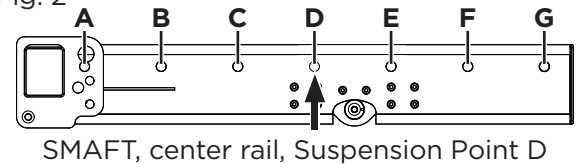


Fig. 3

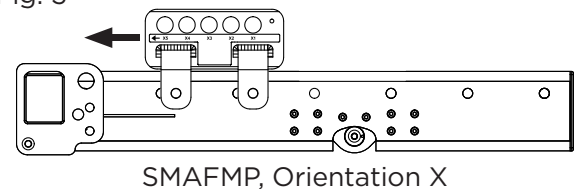


Fig. 4

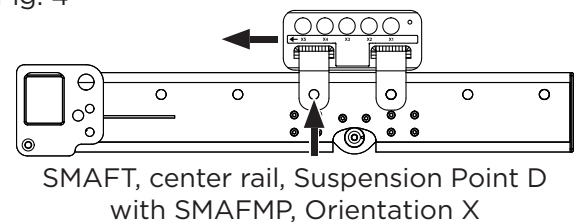
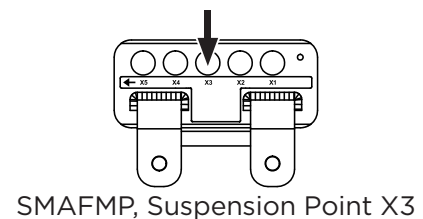


Fig. 5



# ShowMatch DeltaQ Array Loudspeaker

## Array Frame Multipoint Bracket (SMAFMP)



PROFESSIONAL



### Important Safety Instructions



**CAUTION:** This product is intended for installation by professional installers only!

**CAUTION:** Make no modification to system or accessories. Unauthorized alterations may compromise safety, regulatory compliance, and system performance.

**CAUTION:** This accessory is for use with Bose Professional ShowMatch DeltaQ Array loudspeakers only.



### Instrucciones importantes de seguridad



**PRECAUCIÓN:** Solo un instalador profesional deberá montar este producto!

**PRECAUCIÓN:** No realice alteraciones no autorizadas a este producto; esto podría comprometer la seguridad, el cumplimiento de las normas y el rendimiento del sistema.

**PRECAUCIÓN:** Este accesorio está diseñado para usarse únicamente con altavoces Bose Professional ShowMatch DeltaQ Array.



### Instructions importantes relatives à la sécurité



**ATTENTION :** L'installation de ce produit est réservée à un technicien professionnel !

**ATTENTION :** Ne pas faire des modifications non autorisées à ce produit; ce qui pourrait compromettre la sécurité, la conformité réglementaire et la performance du système.

**ATTENTION :** Cet accessoire est destiné pour l'usage avec les haut-parleurs Bose Professional ShowMatch DeltaQ exclusivement.



### Wichtige Sicherheitshinweise



**ACHTUNG:** Dieses Produkt darf nur von fachkundigen Monteuren installiert werden!

**ACHTUNG:** Keine nicht autorisierten Veränderungen am Produkt vornehmen. Diese können die Sicherheit, die Einhaltung von Richtlinien und die Systemleistung beeinträchtigen.

**ACHTUNG:** Dieses Zubehör ist ausschließlich zur Verwendung mit Bose Professional ShowMatch DeltaQ Array Lautsprechern vorgesehen.

## Importer Information

**China Importer:** Bose Electronics (Shanghai) Company Limited, Level 6, Tower D, No. 2337 Gudai Rd. Minhang District, Shanghai 201100

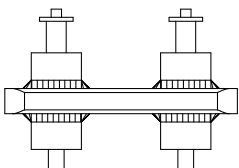
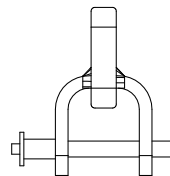
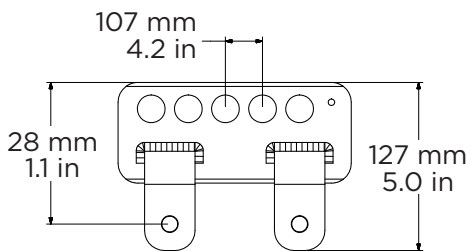
**UK Importer:** Bose Limited Bose House, Quayside Chatham Maritime, Chatham, Kent, ME4 4QZ, United Kingdom

**EU Importer:** Bose Products B.V., Gorslaan 60, 1441 RG Purmerend, The Netherlands

**Mexico Importer:** Bose de México, S. de R.L. de C.V. , Paseo de las Palmas 405-204, Lomas de Chapultepec, 11000 México, D.F.  
For importer & service information: +5255 (5202) 3545

**Taiwan Importer:** Bose Taiwan Branch, 9F-A1, No. 10, Section 3, Minsheng East Road, Taipei City 104, Taiwan. Phone Number: +886-2-2514 7676

## Product Dimensions



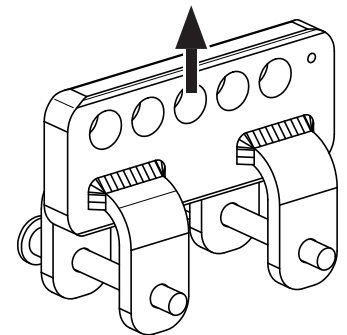
(quick pin tether not shown)

## Working Load Limit

Single-point, 10:1 working load limit (in accordance with ANSI E1.8-2012)

**WLL:** 815 kg (1800 lb)

**IMPORTANT:** Use a graded  $\frac{5}{8}$ -inch lifting shackle (ASME B30.26 or equivalent; not included).



Bose is a trademark of Bose Corporation.

ShowMatch, DeltaQ, and Modeler are trademarks of Transom Post OpCo LLC.

Bose Corporation, Framingham, MA 01701, U.S.A. 1-877-230-5639

©2023 Transom Post OpCo LLC. No part of this work may be reproduced, modified, distributed or otherwise used without prior written permission.



772964-0030

©2023 Transom Post OpCo LLC. All rights reserved.  
Framingham, MA 01701 USA  
BoseProfessional.com  
AM781488 Rev. 03  
September 2023